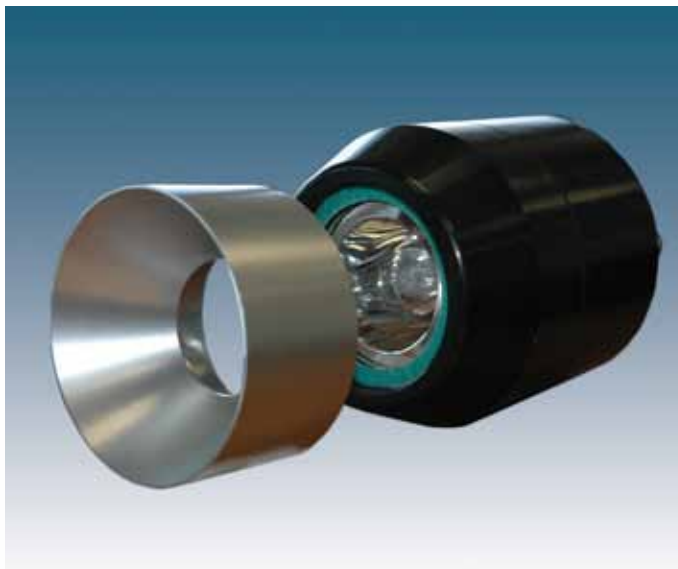


# SV38-150w



The Sea Vision SV38 weld in tank light model for aluminum/steel hulls can be installed in the transom or the hull, it utilizes a 150 watt HID metal halide lamp and 110-230 volt AC power. The lights can be welded at adjustable angles to suit all hull shapes. The hull shape and positioning will dictate the angle of the light you require, angles available are 0 to 50 degree. The SV38 weld in tank model was specifically designed to provide a watertight light for use inside freshwater tanks and ballast tanks. It utilizes a hydraulic hose or tubing to route the wiring from the light to a tank boundary. The vessel must be hauled out for installation although lamp change and any maintenance can be done in the water from within the hull.



## SV38 technical specifications

Application for:	Aluminum/steel hulls
Lamp:	150 watt HID metal halide
Life length:	approx. 3,000 hours plus
Lumens:	12,000
Kelvin colour temp:	7500
Glass lens:	Borosilicate glass
Thickness:	12.7mm / 0.5"
Power supply:	120 VAC 50/60Hz input - running current 1.33 amps 230 VAC 50/60Hz input - running current 0.59 amps
Casing material:	Aluminum 5086/Steel 316
Dimensions:	0-30 degree - 120mm x 175mm / 4.75" x 7" 24-38 degree - 140mm x 175mm / 5.5" x 7" 38-50 degree - 140mm x 175mm / 5.5" x 7"
Angles available:	0-30 degree - weight 1.13 Kg / 2.5 lbs code: SV38 Alu/SS 30 deg 24-38 degree - weight 2.72 Kg / 6 lbs code: SV38 Alu/SS 38 deg 38-50 degree - weight 4.10 Kg / 9 lbs code: SV38 Alu/SS 50 deg

Ballast:	SV18 120 VAC 50/60 Hz 230 VAC 50/60 Hz
Cable:	Only required between the light and ballast (maximum distance 50 feet / 15 meters). High temperature silicone 18/3 shielded copper wire. Normal ships cable can be used from the ballast to the power supply.
Code:	SV 38/150 Alu/SS
Total shipping weight:	10-30 degree - 6 Kg / 13.5 lbs 24-38 degree - 7 Kg / 15 lbs 38-50 degree - 8 Kg / 17 lbs

Installation: Recommended at least 10" (250mm) below the waterline between 3-8 feet (1-2.5 meters) apart.

*This is a guideline only, for specific requirements please contact us.*

*Note: Please specify voltage when ordering.*

*All information is subject to change without prior notice, please confirm details prior to ordering.*

